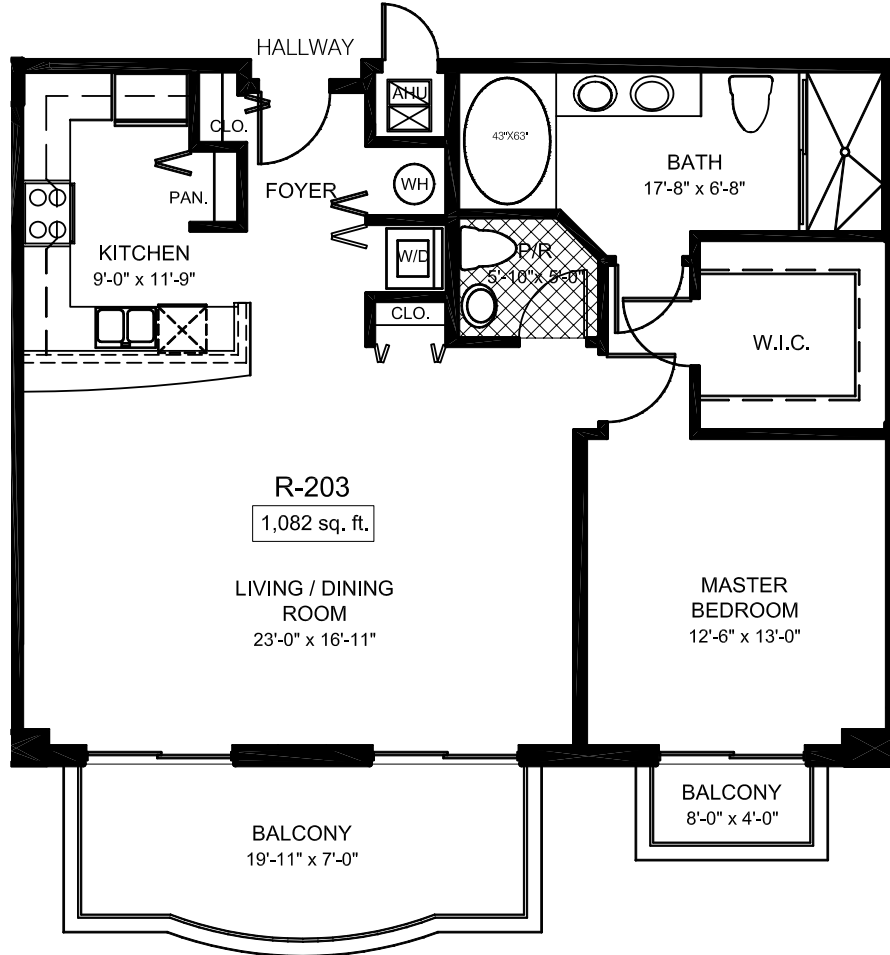


WILTON STATION

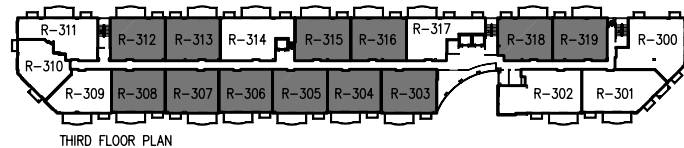
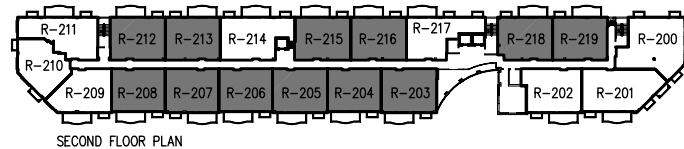


26TH. STREET LOFTS AT WILTON STATION

UNIT R-203 / R-303

UNITS R-204, R-205, R-206, R-207, R-208, R-212, R-213, R-215, R-216, R-218, R-219, R-304, R-305, R-306, R-307, R-308, R-312, R-313, R-315, R-316, R-318, & R-319 ARE SIMILAR

Interior: 1,082 Sq. Ft.
Balconies: 179 Sq. Ft.
Total: 1,261 Sq. Ft.



ARTIST'S RENDERING AND PRICES SUBJECT TO CHANGE. ORAL REPRESENTATIONS CANNOT BE RELIED UPON AS CORRECTLY STATING THE REPRESENTATIONS OF THE DEVELOPER. FOR CORRECT REPRESENTATIONS, MAKE REFERENCE TO THE DOCUMENTS REQUIRED BY SECTION 718.503, FLORIDA STATUTES, TO BE FURNISHED BY A DEVELOPER TO A BUYER OR LESSEE. NOT AN OFFER WHERE PROHIBITED BY STATE STATUTES. STATED DIMENSIONS ARE MEASURED TO THE EXTERIOR BOUNDARIES OF THE EXTERIOR WALLS AND THE CENTERLINE OF INTERIOR DEMISING WALLS AND IN FACT VARY FROM THE DIMENSIONS THAT WOULD BE DETERMINED BY USING THE DESCRIPTION AND DEFINITION OF THE "UNIT" SET FORTH IN THE DECLARATION (WHICH GENERALLY ONLY INCLUDES THE INTERIOR AIRSPACE BETWEEN THE PERIMETER WALLS AND EXCLUDES INTERIOR STRUCTURAL COMPONENTS). ALL DIMENSIONS ARE APPROXIMATE, AND ALL FLOOR PLANS AND DEVELOPMENT PLANS ARE SUBJECT TO CHANGE. ALL FIXTURES AND ITEMS OF FINISH AND DECORATION DEPICTED ARE FOR DISPLAY ONLY AND ARE NOT TO BE INCLUDED WITH THE UNIT. CONSULT THE SALES OFFICE FOR A DESCRIPTION OF THOSE FEATURES WHICH ARE TO BE INCLUDED IN THE UNITS.

